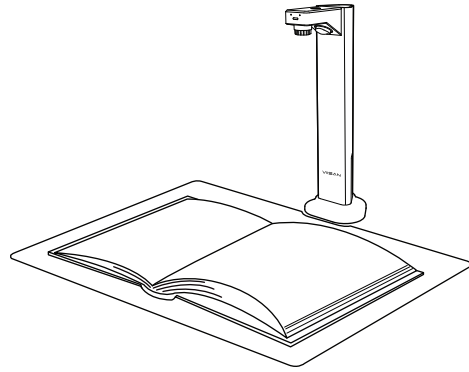


VIISAN®

DL8 Document Camera



Quick Start Guide

Please read this guide before using the product.

Step 1. Instructions

Thank you for purchasing the VIISAN product. The The DL8 is a short-arm document camera with asymmetric full-coverage lighting design. This quick start guide briefly describes the steps to start using this document camera. If you have any technical or service questions about the products, please E-mail our customer service using info@viisan.com then we will provide you with service and support.

Safety & Environmental Information

Federal Communications Commission Statement (Class B)

FCC This device complies with Part 15 of the FCC Rules. Operation is subject to the following two conditions: (1) this device may not cause harmful interference, and (2) this device must accept any interference received, including interference that may cause undesired operation. This equipment has been tested and found to comply with the limits for a Class B digital device, pursuant to part 15 of the FCC Rules. These limits are designed to provide reasonable protection against harmful interference in a residential installation. This equipment generates, uses, and can radiate radio frequency energy and, if not installed and used in accordance with the instruction manual, may cause harmful interference to radio communications. However, there is no guarantee that interference will not occur in a particular installation. If this equipment does cause harmful interference to radio or television reception, which can be determined by turning the equipment off and on, the user is encouraged to try to correct the interference by one or more of the following measures:

- Reorient or relocate the receiving antenna.
- Increase the separation between the equipment and receiver.
- Connect the equipment into an outlet on a circuit different from that to which the receiver is connected.
- Consult the dealer or an experienced radio/TV technician for help.

Any changes or modifications not expressly approved by the party responsible for compliance could void the authority to operate the equipment.

CE Class B (EMC)

CE This product is herewith confirmed to comply with the requirements set out in the Council Directives on the Approximation of the laws of the Member States relating to Electromagnetic Compatibility Directive 2014/30/EU.



This symbol on a product or on its packaging indicates that the product must not be disposed of with other household waste. Instead, it is your responsibility to ensure disposal of waste equipment by handing it over to a designated collection point for the recycling of waste electrical and electronic equipment usually at a Local Amenity Site. The proper recycling of your waste equipment at the time of disposal will help to conserve natural resources and ensure that it is recycled in a manner that protects human health and the environment.

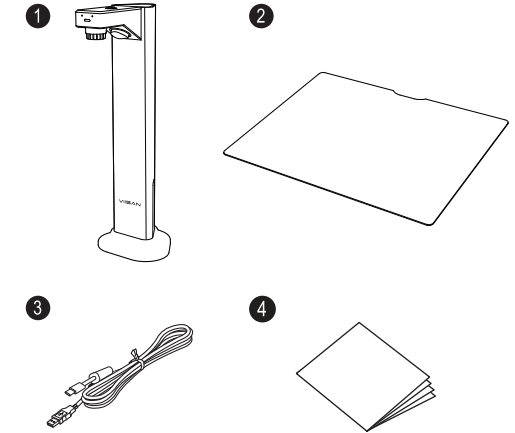
Step 2. Specifications

Image Sensor	8.0-Megapixel CMOS Sensor
F. No.	4.0
Max. Resolution	Optical: 3264 (H) x 2448 (V) pixels Software Interpolation: 4208 x 3156 pixels (13MP)
Max. Video Frame Rate	1920 x 1080@25fps 1600 x 1200@30fps
Focus	Fixed focus
Zoom	3X digital zoom by using the software
Max. Shooting Area	A3, 420 x 297 mm, 16.5 x 11.7 inch
Color bit depth	24-bit
Built-in LED	3-level control LED light
Status-LED	Power on: Blue-light
Video Compression	MJPEG, YUY2
Output Format	Picture: JPG, TIFF, BMP, PNG Document: PDF(Image), PDF (Searchable), PDF (Text), Excel, WORD, TEXT, MP3 E-Book: EPUB Video: AVI, MPEG, FLV, WMV
Microphone	Built-in
Interface	USB 2.0 Type-C x 1 (For PC Connection) USB 2.0 Type-A x 1 (For USB Extension)
Power	5V by USB power
Dimension	118 (L) x 98 (W) x 305 (H) mm
Net Weight	Approx. 1kg

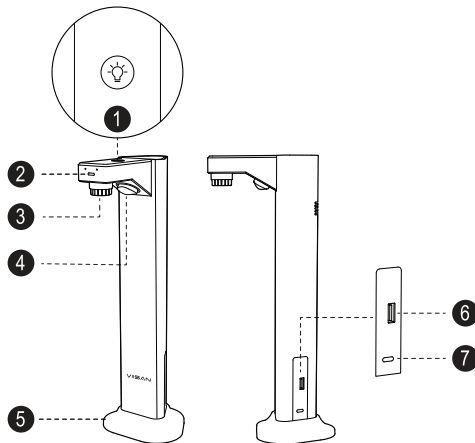
Step 3. Unpacking

Before using, make sure the following items are included in the package. If anything is missing, contact the retailer where you purchased the product.

1. DL8 Document Camera
2. Scan pad
3. USB Cable
4. Quick Start Guide



Step 4. Parts Descriptions



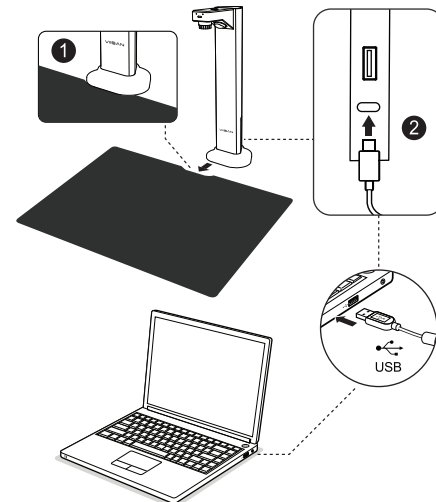
1. LED Touch Button
2. LED Indicator
3. Camera
4. LED Light
5. Base
6. USB 2.0 Type-A Port (For USB Extension)
7. USB 2.0 Type-C Port (For PC Connection)

Step 5. Getting Started

1. Place the document camera on the scanning pad and ensure the scanning pad is in contact with the document camera base.
2. Plug the supplied USB cable into the back of the document camera and connect another end to an available USB port on your computer.

Note:

When plugging the document camera into the computer, make sure your system device manager has recognized a "Document Scanner" device.



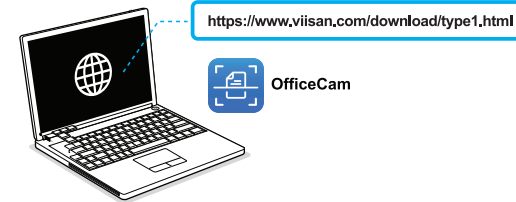
Step 6. Connect Setting

Using the compatible software

The DL8 is a standard UVC camera, you can use it with a variety of software as long as they recognize the video source coming from a UVC camera. For example, you can use it with third-party video conferencing software like Zoom, Microsoft Teams, or Google Meet. However, to get the full functionality of this Portable Visualizer, we'd recommend using it with VIISAN OfficeCam software.

It can take snapshots, recognize the barcodes and scan documents or books into JPEG file and convert them into searchable PDF or editable Word, Excel, Text formats with its embedded OCR engine.

To get this powerful and free software, download it from VIISAN's support center at the below link.



To get more details about VIISAN OfficeCam, You can visit VIISAN official website to watch the instruction video or download the user guide via <https://www.viisan.com/support/list.html>.



VIISAN Technology Co., Ltd.
www.viisan.com
Customer service: info@viisan.com

Step 7. Warranty Information

Warranty Card	
Model No.: DL8 Document Camera	
This product provides limited warranty continues for one (1) year from the date of purchase.	
Name:	Email:
Address:	
Product S/N:	
Reseller Info.:	
Date of purchase:	

Warranty Exclusions

The following circumstances excluded from warranty coverage:

- Products damage caused by catastrophes, thunder stroke, faulty electric power, and environmental factors.
- Defacing of product labeling (label alterations and falsifying, serial number missing, serial number no longer discernible, serial number invalid). All serial numbers are recorded and tracked for warranty purposes.
- Unauthorized changes of non-parts, modifications or alterations, parts removal in or to the products.
- Damage caused by operator error or operator fails to comply user manual instruction, such as, but not limited to improper storage resulting in product get wet, corrosion, ell off, squeezed or exposed to inadequate temperature/humid environment.
- Accessories or packing material such as boxes, user manual, etc.